

# Advanced Conversation Training HEALTHCARE Professionals & Trainees

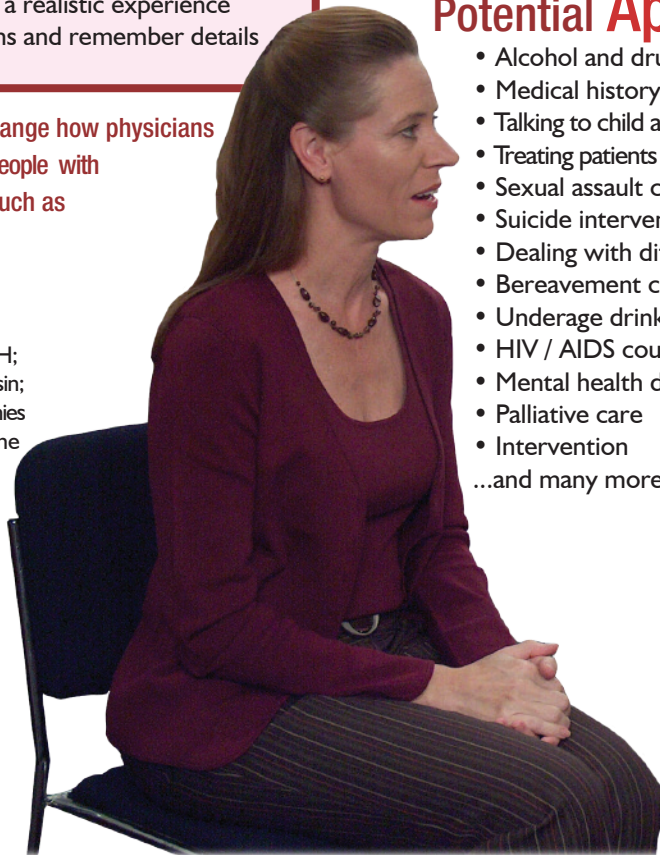
## Your Own Standardized Patient(SP)

SIMmersion training can supplement or replace traditional SP scenarios. Talk to virtual SPs who

- Are different, unpredictable, and present dynamic challenges in every conversation
- You can talk with for as little as five minutes or over an hour
- Are video-based for a realistic experience
- Portray real emotions and remember details

"SIMmersion is going to change how physicians are taught how to care for people with behavioral/social problems such as alcohol, drugs, weight, domestic violence, and mental health."

-Dr. Michael Fleming, MD; MPH;  
Professor, University of Wisconsin;  
Member of the National Academies  
of Science Institute of Medicine



## Complete Training Experience

Immediate, any-time practice of concepts

- **Develops** critical conversation skills
- **Promotes** accelerated learning
- **Builds, retains, and refreshes** skills

## Potential Applications

- Alcohol and drug screening
- Medical history taking
- Talking to child and adolescent patients
- Treating patients from different cultures
- Sexual assault counseling
- Suicide intervention
- Dealing with difficult patients
- Bereavement counseling
- Underage drinking
- HIV / AIDS counseling
- Mental health diagnosis
- Palliative care
- Intervention
- ...and many more.

## Advanced Help for Patients

SIMmersion training can also improve patients' quality of life through direct intervention. This includes

- **Autism:** social skills practice
- **Teens:** peer pressure
- **Mentally disabled:** job interview practice
- **Armed Services:** PTSD issues



## Some of Our Clients

- National Institutes of Health  
- NIDA, NIMH, NIAAA
- U.S. Army
- U.S. Navy

## Advantages of SIMmersion Conversation Training

- **Learn** on your own - reach a high level of skill with or without an instructor
- **Receive** continuous, objective feedback
- **Train** anywhere
- **Practice** for hours

When healthcare providers excel in communication and listening skills, patients:

- **Respond** better to care
- **Comply** with recommendations
- **Are less likely to sue**

and providers:

- **Make** quicker, more accurate diagnoses
- **Provide** better preventative care

# SIMmersion LLC

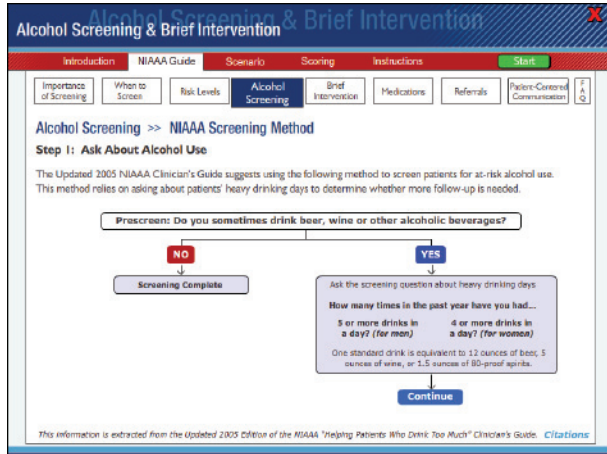
Immersive Simulations®

For more information,  
visit our website:

[www.simmersion.com](http://www.simmersion.com)

SIMmersion LLC® is a Johns Hopkins University  
Applied Physics Laboratory Licensee

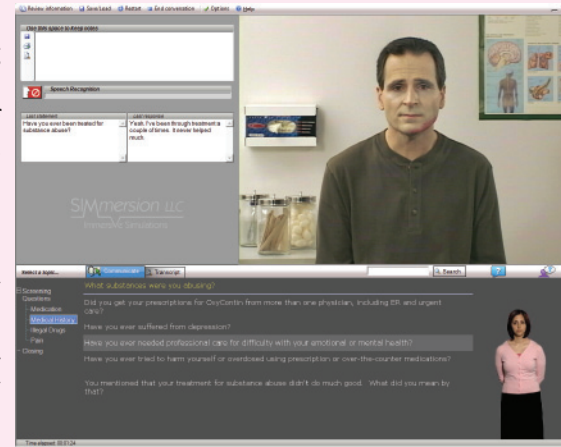
# ACQUISITION



Introductory materials outline teaching objectives, provide interactive training content, describe the scenario, and include a software users' guide.

E-learning material can be adapted from existing course content or original material.

SIMmersion patented PeopleSim™ non-branching technology allows users to select from a variety of topics, enabling them to discuss what they want, when they want. The simulation character's motives, personality, or history may change before each conversation, providing a new experience every time.



## Coach Actions

SIMmantha, your coach, uses nonverbal gestures to indicate performance from poor to excellent.



## Help With What You Said

SIMmantha provides further insight into users' choices.



SIMmantha gives instant feedback during and after the simulated conversation, and users can request additional, specific feedback.



Users receive a comprehensive assessment score after each play. Conversations can be replayed with a line-by-line after-action review to take advantage of each teachable moment.



SIMmantha™

